

Client: Syntera
support@syntera-co.com

Sample received: **04/06/26**
Analysis conducted: **04/14/26**

Compound:	KLOW Blend	CAS:	137525-51-0
Batch/Lot #:	SYN-GKBT50101010-0002	Formula:	C62H98N16O22
Appearance:	Blue lyophilized powder	Mol Wt:	1419.5 g/mol

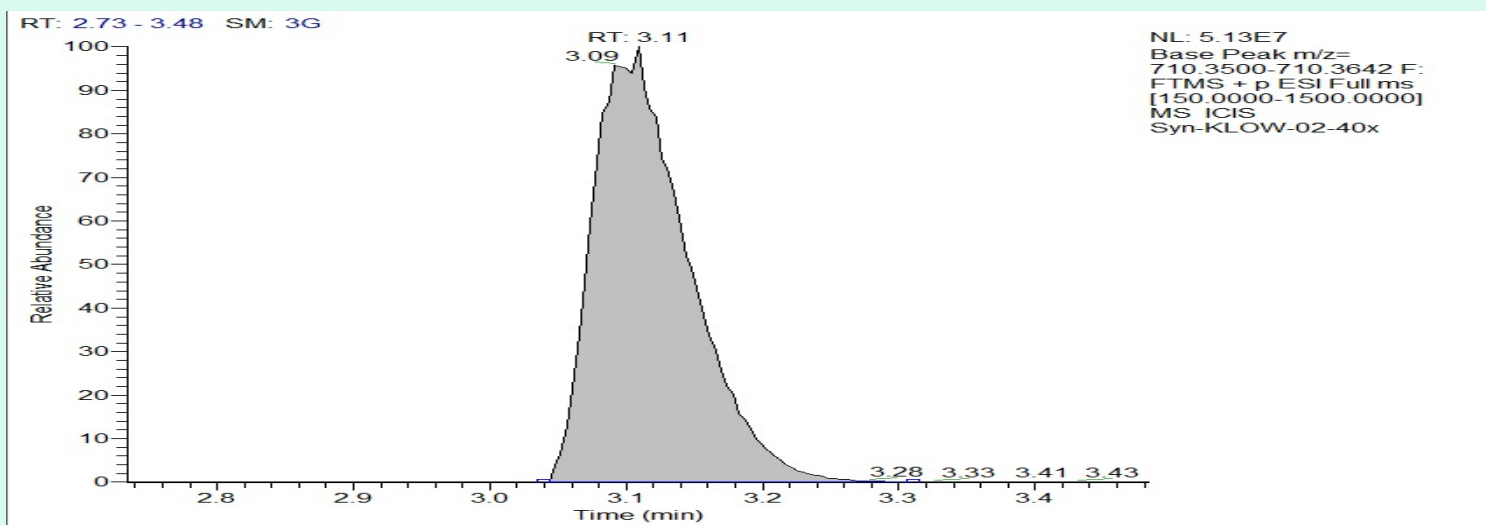
Method: Qualitative and Quantitative chemical analysis by Ultra High Performance Liquid Chromatography with Mass Spectrometry

Pubchem CID: 9941957

[BPC 157](#) | [C62H98N16O22](#) | [CID 9941957 - PubChem](#)

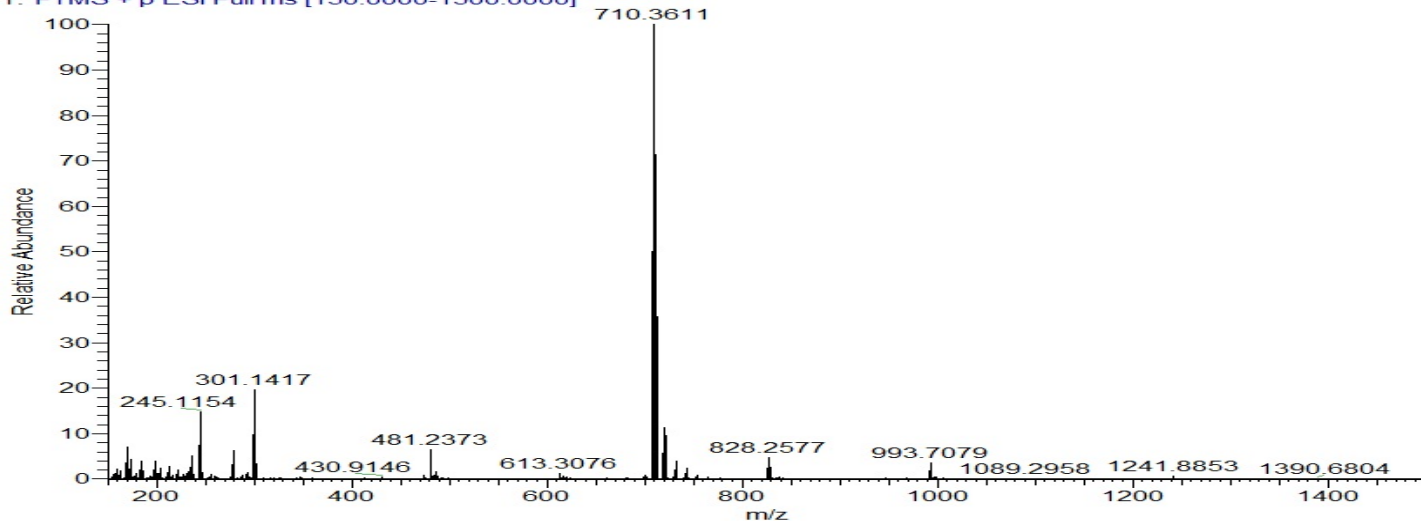
	Specification	Result	
Identity Test:	BPC 157	BPC 157	Conforms
Quantity:	10 mg	10.34 mg	Conforms
Purity:	>99%	99.58%	Conforms

LC-MS Chromatogram and Retention Time Analysis

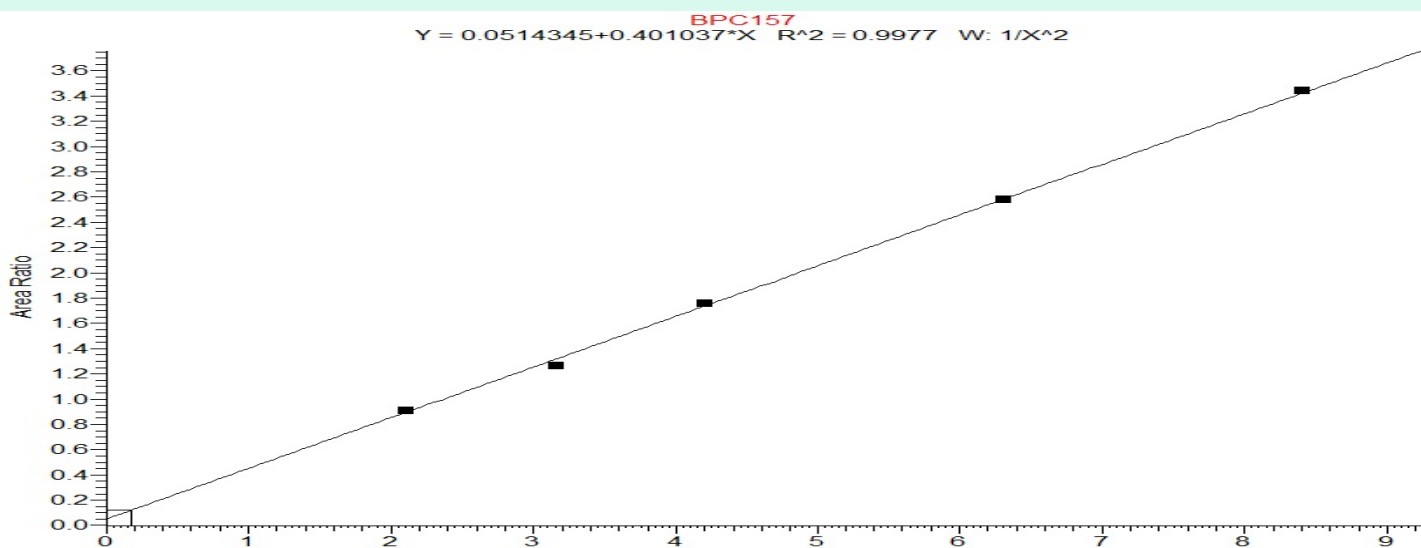


Full Scan Mass Spectrometry Analysis

Syn-KLOW-02-40x #713 RT: 3.11 AV: 1 NL: 5.17E7
T: FTMS + p ESI Full ms [150.0000-1500.0000]



Calibration Curve



Analysis Performed by
Dr. Victor Ugur
Analytical Chemist
contact@bioregen.com

COA #12809
Security Key **SYNTERA004**
bioregen.com/verify



Victor Ugur

Client: Syntera
 support@syntera-co.com

 Sample received: **04/06/26**
 Analysis conducted: **04/14/26**

Compound:	KLOW Blend	CAS:	77591-33-4
Batch/Lot #:	SYN-GKBT50101010-0002	Formula:	C212H350N56O78S
Appearance:	Blue lyophilized powder	Mol Wt:	4963.0 g/mol

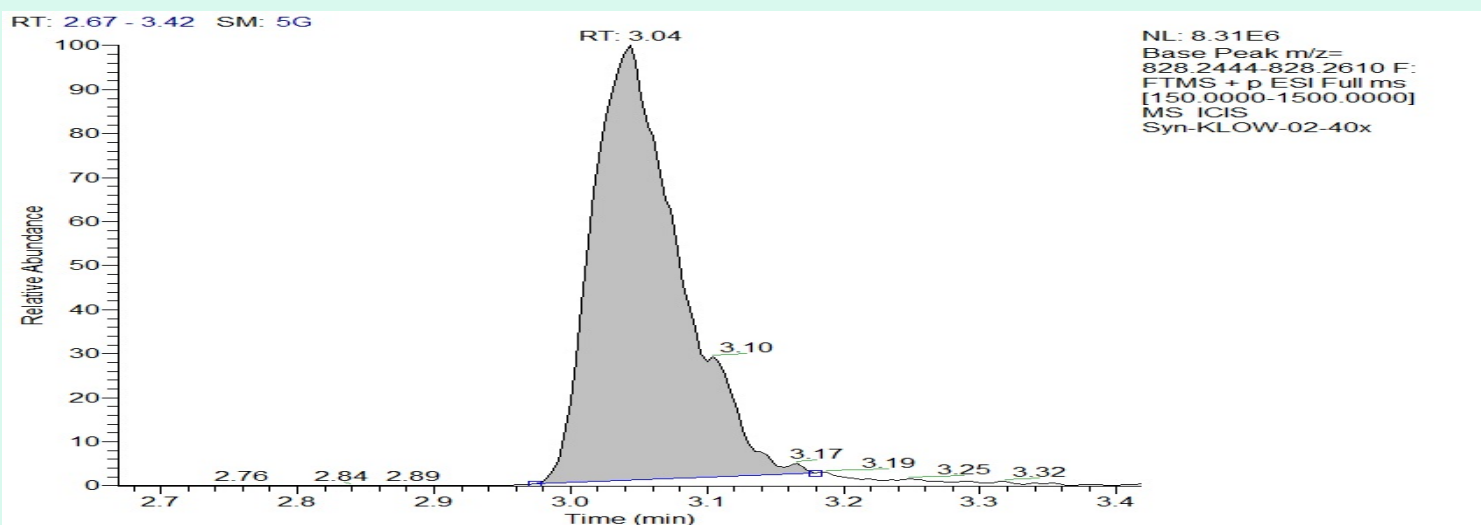
Method: Qualitative and Quantitative chemical analysis by Ultra High Performance Liquid Chromatography with Mass Spectrometry

Pubchem CID: 45382195

[TB4|C212H350N56O78S | CID 45382195 - PubChem](#)

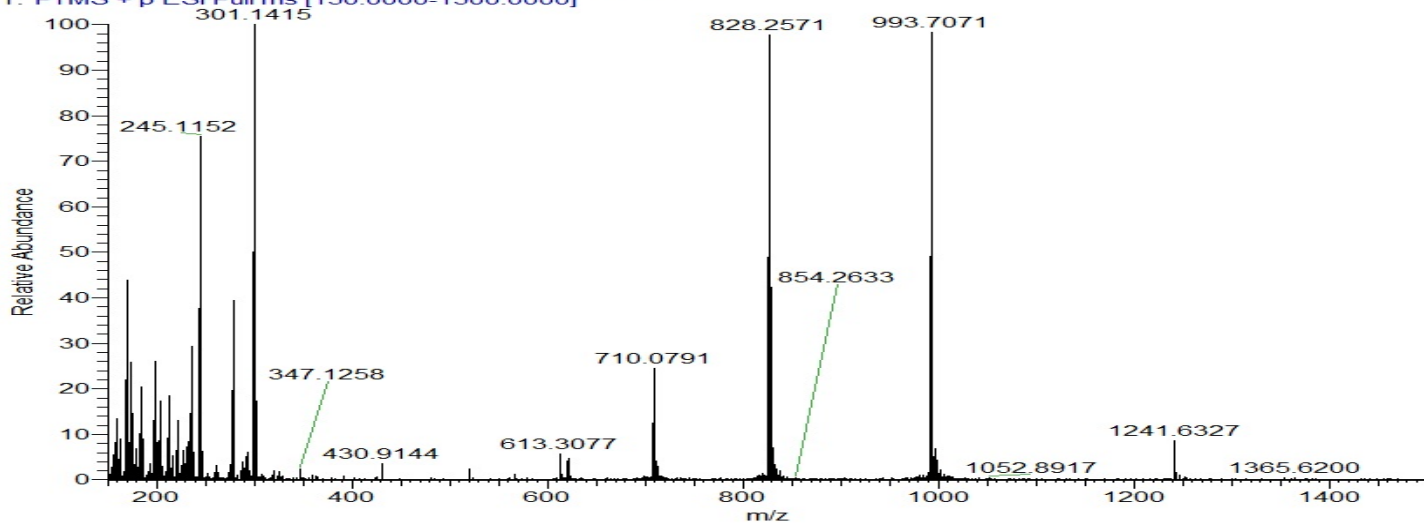
	Specification	Result	
Identity Test:	TB500 (TB4)	TB4	Conforms
Quantity:	10 mg	9.45 mg	Conforms
Purity:	>99%	99.72%	Conforms

LC-MS Chromatogram: Retention Time and Peak Analysis

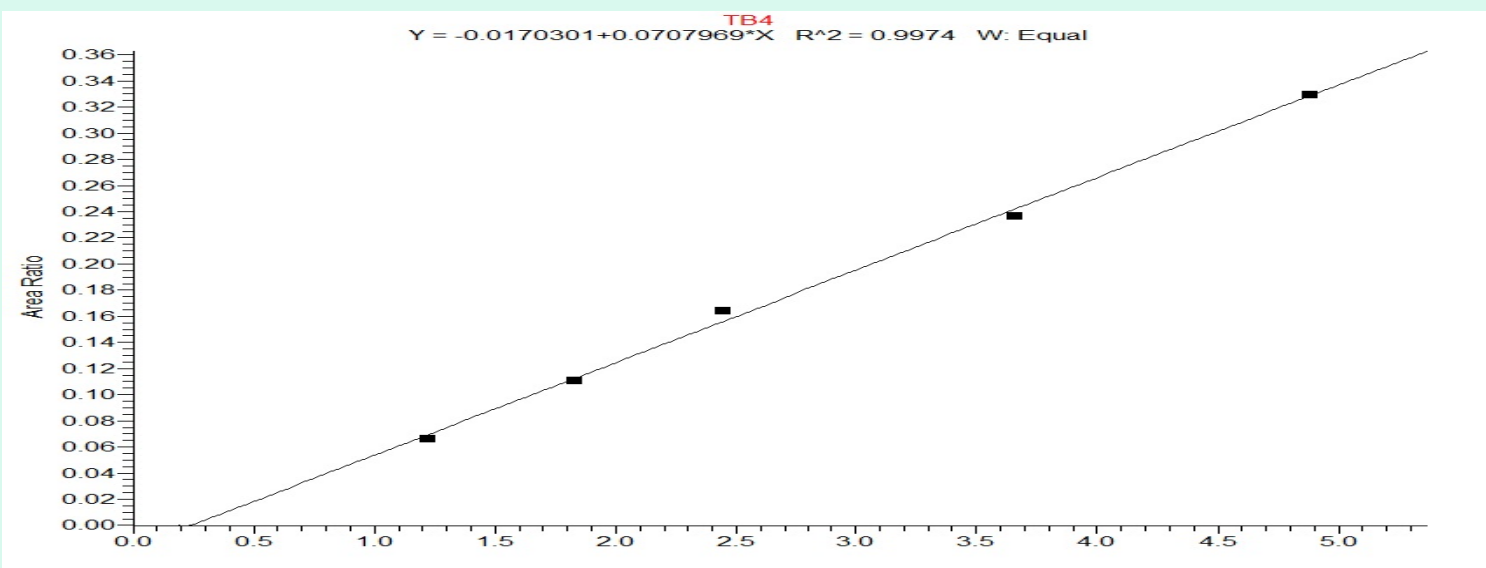


Full Scan Mass Spectrometry Analysis

Syn-KLOW-02-40x #698 RT: 3.04 AV: 1 NL: 8.86E6
T: FTMS + p ESI Full ms [150.0000-1500.0000]



Calibration Curve



Analysis Performed by
Dr. Victor Ugur
Analytical Chemist
contact@bioregen.com

COA #12809
Security Key **SYNTERA004**
bioregen.com/verify



Victor Ugur

Client: Syntera
 support@syntera-co.com

 Sample received: **04/06/26**
 Analysis conducted: **04/14/26**

Compound:	KLOW Blend	CAS:	49557-75-7
Batch/Lot #:	SYN-GKBT50101010-0002	Formula:	C14H24N6O4
Appearance:	Blue lyophilized powder	Mol Wt:	340.38 g/mol

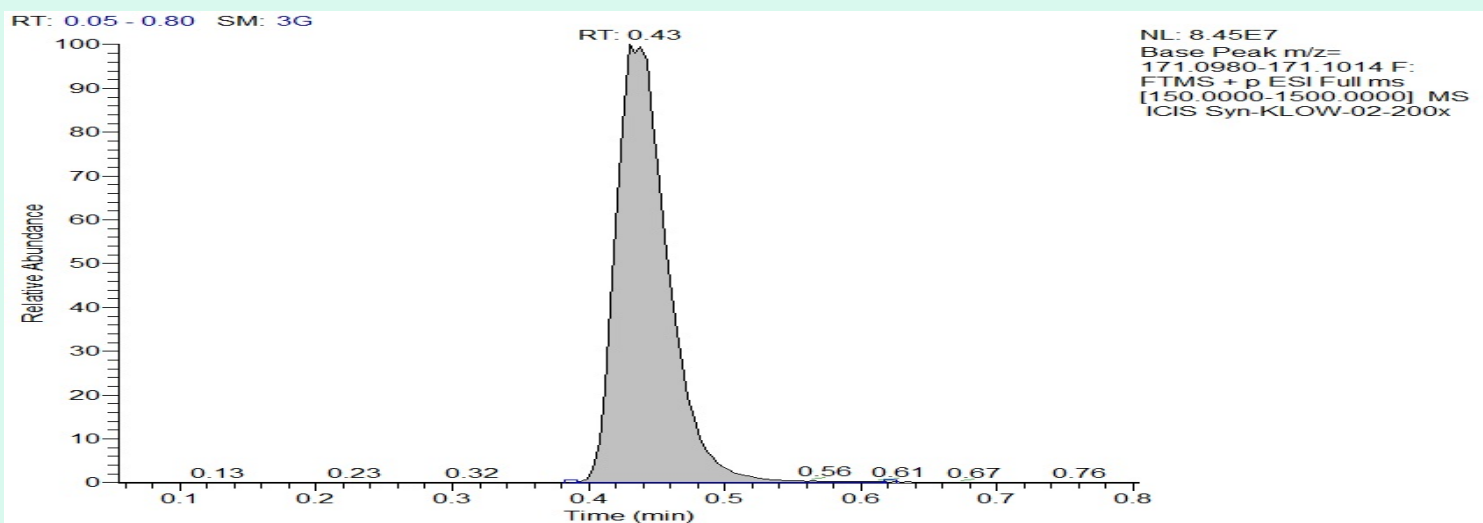
Method: Qualitative and Quantitative chemical analysis by Ultra High Performance Liquid Chromatography with Mass Spectrometry

Pubchem CID: 342538

[GHK-Cu](#) | [C14H24N6O4Cu](#) | [CID 342538](#)

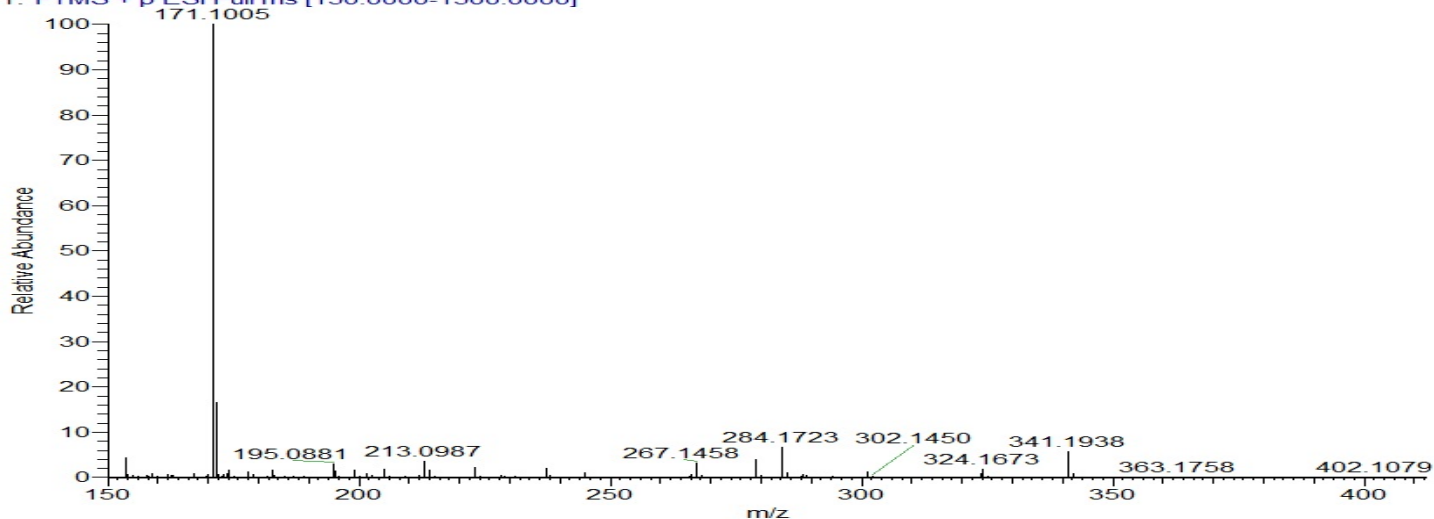
	Specification	Result	
Identity Test:	GHK-Cu	GHK-Cu	Conforms
Quantity:	50 mg	57.64 mg	Conforms
Purity:	>99%	99.62%	Conforms

LC-MS Chromatogram: Retention Time and Peak Analysis

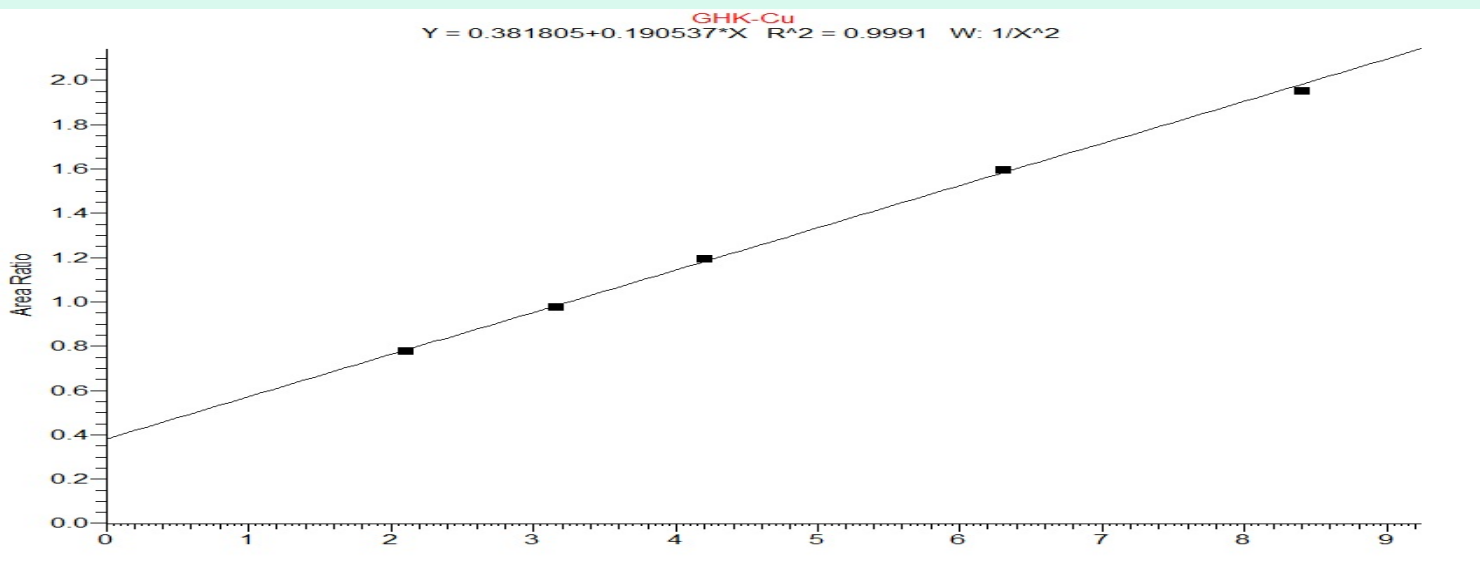


Full Scan Mass Spectrometry Analysis

Syn-KLOW-02-200x #99 RT: 0.43 AV: 1 NL: 8.05E7
T: FTMS + p ESI Full ms [150.0000-1500.0000]



Calibration Curve



Analysis Performed by
Dr. Victor Ugur
Analytical Chemist
contact@bioregen.com

COA #12809
Security Key **SYNTERA004**
bioregen.com/verify



Victor Ugur

Client: Syntera
 support@syntera-co.com

 Sample received: **04/06/26**
 Analysis conducted: **04/14/26**

Compound:	KLOW Blend	CAS:	67727-97-3
Batch/Lot #:	SYN-GKBT50101010-0002	Formula:	C16H30N4O4
Appearance:	Blue lyophilized powder	Mol Wt:	342.43 g/mol

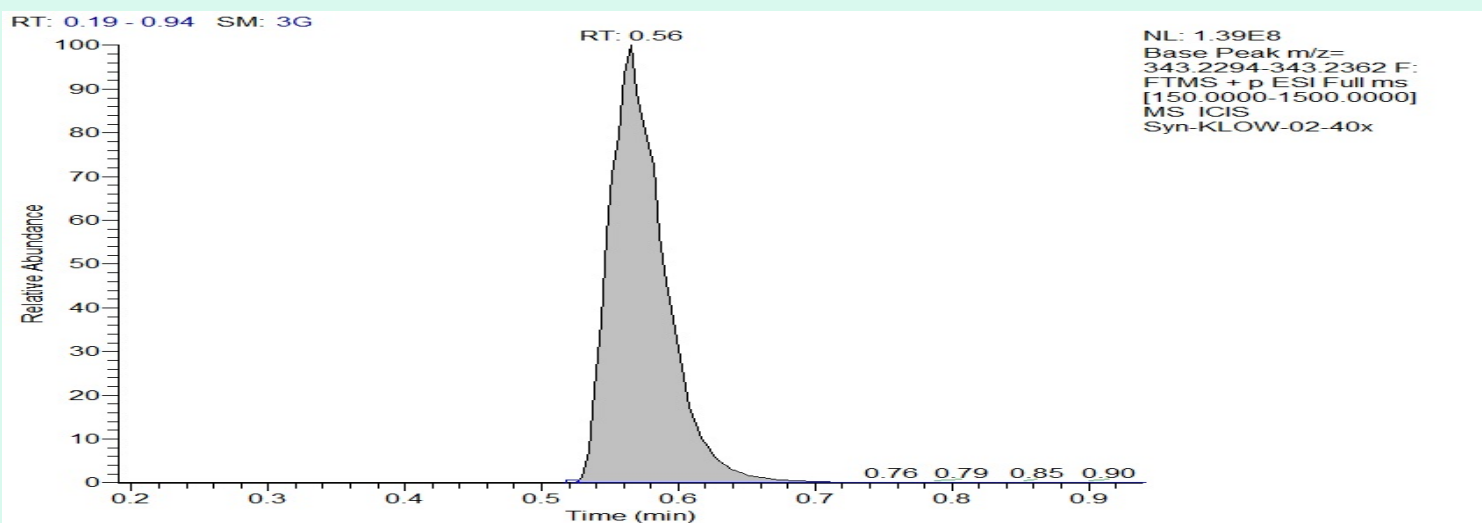
Method: Qualitative and Quantitative chemical analysis by Ultra High Performance Liquid Chromatography with Mass Spectrometry

Pubchem CID: 125672

KPV | 67727-97-3 | CID C16H30N4O4

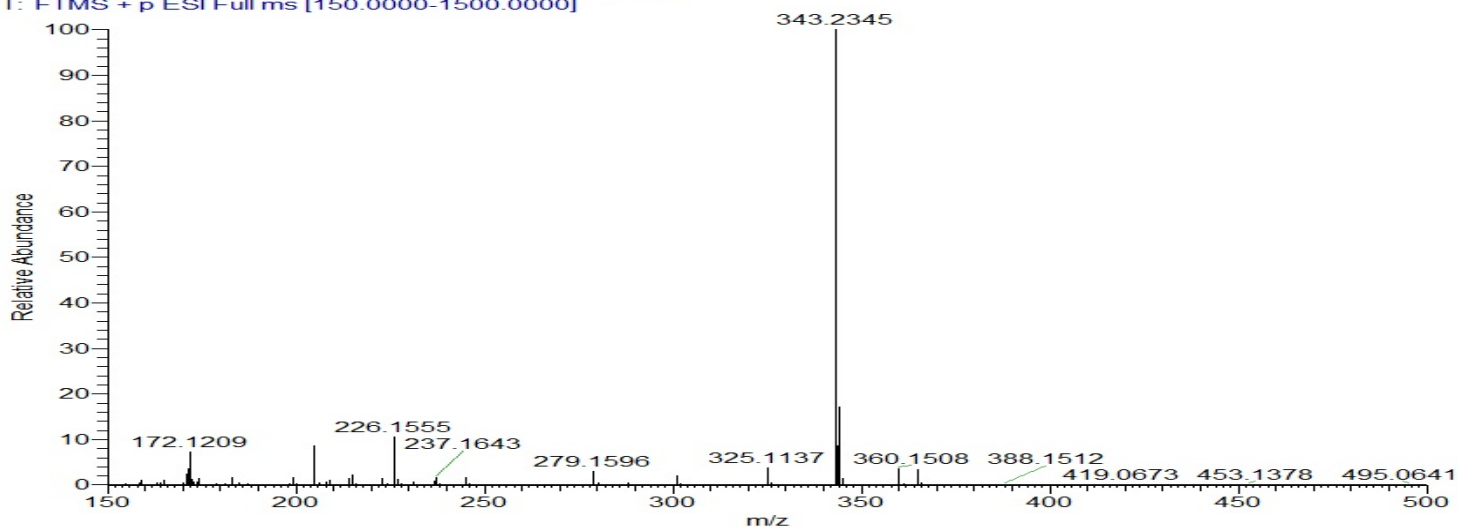
	Specification	Result	
Identity Test:	KPV	KPV	Conforms
Quantity:	10 mg	10.29 mg	Conforms
Purity:	>99%	99.38%	Conforms

LC-MS Chromatogram: Retention Time and Peak Analysis

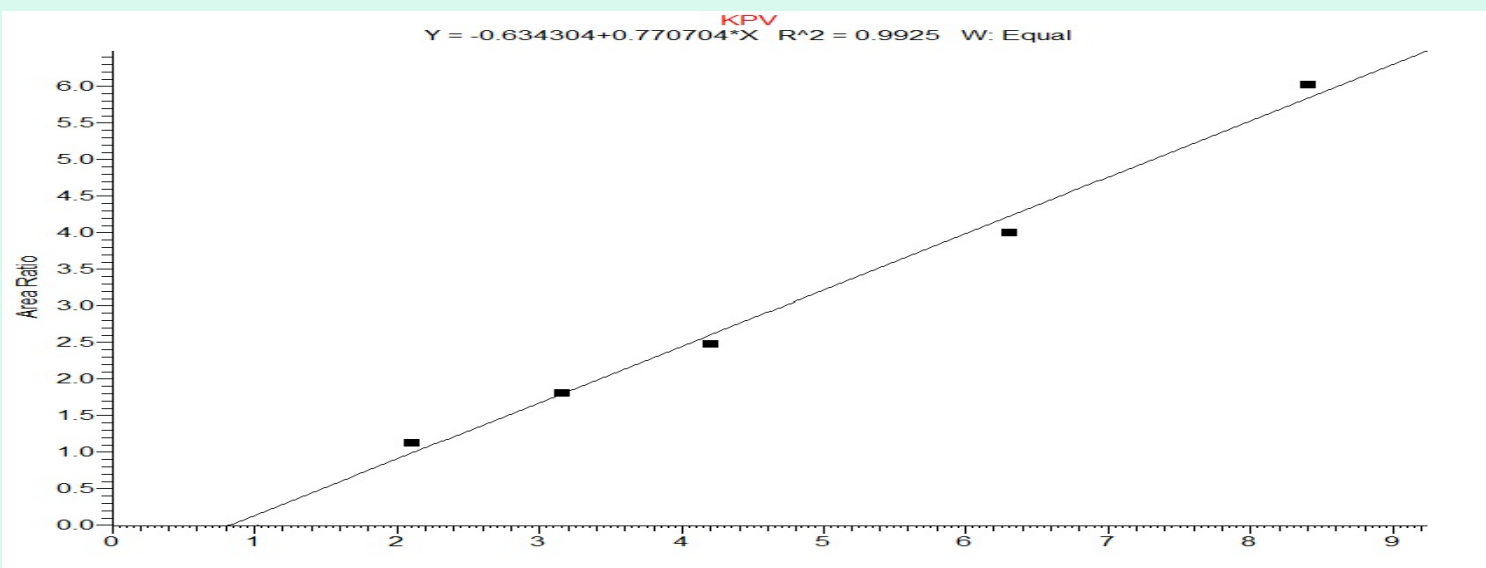


Full Scan Mass Spectrometry Analysis

Syn-KLOW-02-40x #130 RT: 0.56 AV: 1 NL: 1.36E8
T: FTMS + p ESI Full ms [150.0000-1500.0000]



Calibration Curve



Analysis Performed by
Dr. Victor Ugur
Analytical Chemist
contact@bioregen.com

COA #12809
Security Key **SYNTERA004**
bioregen.com/verify



Victor Ugur